

Lumina News Copyright ©2004 on Monday, February 1, 2010

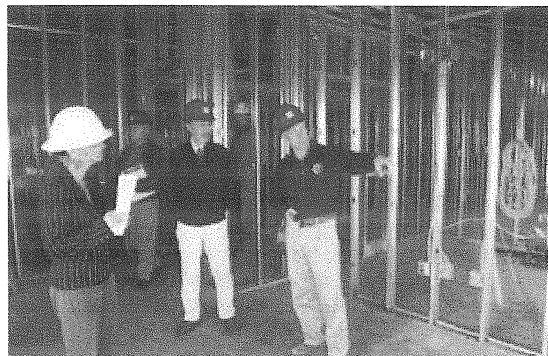
RECEIVED  
RESOLUTE

## Cignotti, Collins tour public safety facility

FEB 02 2010

by Marimar McNaughton  
Friday, January 29, 2010

PROJECT/ORIGINAL/COPIES



Project manager Steve Dellies, right, leads mayor David Cignotti, alderman Susan Collins and others on a tour through the public safety facility, currently under construction, on Thursday, Jan. 28.

The sound of power saws grinding metal trusses punctuated the airspace inside the town of Wrightsville Beach's public safety building now under roof.

Mayor David Cignotti and Alderman Susan Collins donned hard hats on Jan. 28 for a tour of the new facility accompanied by town manager Bob Simpson, building architect Jim Stumbo, Stewart, Cooper & Newell Architects; construction manager Ray Jenkins, Resolute Building Company and Steve Dellies, Town of Wrightsville Beach project manager.

The building is currently on target for its anticipated completion in June.

"We're right where we need to be," Jenkins said.

The elevated structure was designed to accommodate fire, ocean rescue and police operations and serve as an emergency operations center during catastrophic events. The facility may accommodate ground level storage for bicycles, parking meters and pay stations adjacent to a three-bay garage reserved for 80-foot fire trucks. Inside, 10 dormitories will provide sleeping quarters for firefighters, a kitchen and a dining area, equipment storage, administrative offices, a shared training room for police and firefighters, and a shared conference room. The fire and police departments will be separated by security doors. The police department portion of the facility will include offices, containment areas, an armory, I.D. lab, evidence storage and locker rooms.

The only change order thus far in the construction process that began with a ground breaking in May 2009 was the addition of a dedicated female locker room.

With exposed steel wall studs framing the interior rooms, it was possible to observe the bones of the structure before drywall installation begins next week, especially the wire mesh security walls in the armory, lab and evidence storage areas and reinforced concrete block walls in the containment area.

Jenkins said the structural walls are insulated with 2 inches of rigid and 8 inches of R19 insulation. The roof is insulated with 4 inches of rigid insulation and the floor with another 2 inches to create a big, thermal envelope.

The installation of windows is nearing completion. Next week the exterior siding will be delivered as will gravel for the front and side of the building where curbs and gutters have been placed.

When completed with landscape material, the ground level storage area will be wrapped with a decorative chain link fence, fastened at the top for swinging open in the event of a flood.

The façade, through the placement of an architectural feature that delineates the main entrance, will be embellished with the town's seal.